



# Parish Profile

Loving God; loving neighbours;  
sharing Jesus with you

## The Parish of Holcombe and Hawkshaw







# WELCOME



Peel Tower – Holcombe Moor

# CONTENTS



**PAGE**

|    |                                       |  |
|----|---------------------------------------|--|
| 4  | <b>WHO WE ARE</b>                     | Vision Statement; Safeguarding   |
| 5  | <b>WHERE WE ARE</b>                   | Location   |
| 6  | <b>WHO WE ARE LOOKING FOR</b>         |  |
| 7  | <b>OUR WORSHIP CENTRES</b>            | Emmanuel, Holcombe   |
| 8  |                                       | Emmanuel Church Centre   |
| 9  |                                       | St Mary, Hawkshaw  |
| 11 | <b>CHILDREN &amp; YOUNG PEOPLE</b>    | Children and Families Lead<br>Our Church Schools   |
| 12 |                                       | Children & Youth Activities  |
| 14 | <b>FELLOWSHIP &amp; COMMUNITY</b>     | Church-based Groups<br>Ellen Strange Memorial Walk<br>Voluntary Groups & Commercial Bookings |
| 15 | <b>NEIGHBOURING CHURCHES</b>          | Mission Community<br>Churches Together in Ramsbottom   |
| 16 | <b>MINISTRY TEAM</b>                  | Ordained Ministers Licensed to the Parish; Readers   |
| 17 |                                       | ALMs; Children & Families Lead; Focal Leader; Continuing Development                         |
| 20 | <b>LICENSED PLACES OF WORSHIP</b>     |  |
| 22 | <b>THE VICARAGE</b>                   |  |
| 23 | <b>FINANCES</b>                       | Stewardship; Mission Giving  |
| 24 | <b>ACCOUNTS 2024</b>                  |  |
| 26 | <b>CHALLENGES &amp; OPPORTUNITIES</b> |  |

**APPENDICES**

|    |                          |                                   |
|----|--------------------------|-----------------------------------|
| 27 | 1: Information           | Parish & Diocesan; Communications |
| 28 | 2: Parish Boundary       |                                   |
| 29 | 3: Worship Pattern       | 33                                |
| 30 | 4: Attendance Figures    | 34                                |
| 31 | 5: Mission Community     | 35                                |
|    | 6: Mission Community MAP |                                   |
|    | 7: Parish MAP            |                                   |
|    | 8: Parish Survey         |                                   |



# WHO WE ARE

**The Parish of Holcombe and Hawkshaw** was formed in 2009 by the amalgamation of the parishes of Emmanuel, Holcombe and St Mary, Hawkshaw. The parish is a welcoming, spirit-filled parish with three distinct, but mutually supportive centres of worship. Whilst at one in their theological approach, they have very different styles of worship and liturgy.

There is one united PCC which meets six times per year. The Parish Leadership Team is made up of the standing committee plus other members, decided by the PCC, representing each of the three worship centres. Each centre has a Worship and Building Team to oversee worship and deal with building maintenance.

## VISION STATEMENT

In our parish:

- We will welcome others and serve the community through our love and care.
- We want to provide inspirational worship in various styles to meet the needs of all.
- Our teaching, based on the authority of the Bible, aims to connect faith to daily life, sustaining, encouraging and challenging everyone.
- We aim to have welcoming and warm buildings that enable us to worship, glorify God and aid mission.
- We seek to reach out through God's love of all people, sharing the joy and wonder of the faith we have in our daily lives with Jesus and growing His worldwide church in faith, hope and love.

## SAFEGUARDING

We take safeguarding very seriously in the Parish of Holcombe and Hawkshaw.

We have a Parish Safeguarding Officer, with deputies appointed for each worship centre. All of our volunteers working with children, young people and vulnerable adults have completed the relevant safeguarding training in line with diocesan requirements and their DBS checks are kept fully up-to-date.

Our aim is to ensure a strong culture of safeguarding across the parish, creating the safest possible environment for our youngest members to learn, grow and thrive, and the more vulnerable members of our church family to feel loved and secure.



# WHERE WE ARE



## LOCATION

Holcombe and Hawkshaw are both pretty villages on the edge of the small mill town of Ramsbottom in the Metropolitan Borough of Bury, north of Manchester. Holcombe and Hawkshaw are largely residential, with a mixture of properties extending to the £1million plus and with some residual farming and livery.

Most of the parish's population is in the Holcombe Brook/Greenmount area, made up of traditional housing stock, which is where our church/hall/community centre – Emmanuel Church Centre (ECC) – is located. The demographics are fairly mixed, but with a higher-than-average number of retirees and of professional and trades people.

Public transport is good through Holcombe Brook although there is very little through Hawkshaw and none through Holcombe Village.

Schools are generally good with outstanding elements. There are numerous pubs/restaurants, a small shopping precinct at Holcombe Brook and several shops with a post office, tennis club, medical centre and garden centre.





# WHO WE ARE LOOKING FOR

As a parish, we have had a sense of excitement about where God is leading us on this next stage of our journey, and who will travel there with us.

We pray that our next rector and Mission Community leader will be:

- A leader who is led by the Holy Spirit, is prayerful and passionate in their love for God and will positively encourage an openness to the spirit in both ministry and gifts among the congregation.
- One who will be grounded as a Bible teacher and will have the ability to give strong Bible based preaching and teaching, imaginatively communicating biblical truth relevantly so all can understand.
- One empathetic to different styles of worship and expressions of church.
- A leader, able to encourage, motivate, delegate and empower the gifts of church members, enabling them to live out their Christian faith in their lives.
- A listener who is genuine, humble, compassionate and caring; able to relate to all ages and a welcoming person, with a love for all people. Put another way – kind, friendly, approachable and with a sense of humour.
- One who will continue to support and further develop lay ministry within services and the life of our churches, including all aspects of the parish.
- A keen visitor within the congregation and parish, who is able to work with our dedicated Pastoral Team. We have a number of parishioners who are housebound and in residential care.
- One with a strong awareness of the importance of safeguarding and who will continue to foster an effective safeguarding culture within the parish.
- One able to develop a long-term vision for the growth and future of our parish.
- One able to spot opportunities and potential within the parish and, led by the Holy Spirit, take us forward.
- Someone aware of their own strengths and areas for development.

We recognise that this will be exacting, but there is tremendous spiritual and practical support from enthusiastic ordained and lay people throughout the parish.



# OUR WORSHIP CENTRES



## EMMANUEL, HOLCOMBE

Here we have fairly traditional Anglican worship on Sunday mornings, with robed clergy and choir and traditional church music with organ and, occasionally, piano, using mainly Common Worship. There is a good musical tradition with hymns from Anglican Hymns Old and New. Holy Communion alternates with Morning Worship. On the fifth Sunday of the month we have Holy Communion BCP 1662, usually using Hymns A&M revised. In the afternoon or evening there is a monthly Choral Evensong using the 1662 (BCP) liturgy, and Hymns A&M.

The Sunday morning congregation is small, averaging 25 to 30 adults including seven choir members, and is generally of pensionable age. At the monthly Choral Evensong attendance averages 26. Numbers have fallen over the last five years. At our annual Carol Service our adult choir is joined by several school children but we struggle to attract children for main services.

At special services such as Baptisms, Harvest, Carol Services etc printed service sheets are sometimes used or words are presented via PowerPoint onto a retractable projection screen.

Minister's vestments: Cassock, surplice and stole.





## OUR WORSHIP CENTRES

### EMMANUEL CHURCH CENTRE (ECC)

The congregation here is also largely of pensionable age. Holy Communion, (Common Worship), alternates with Morning Worship, with a Taizé Service each quarter. Clergy robe when appropriate. (Minister's vestments: Cassock, surplice and alb or stole) We also have two mid-week Communion services each month.

Music is led by piano, using Songs of Fellowship: there is no choir. Typical current attendance is about 30 to 35 adults. This is a very caring fellowship.

The garden at ECC is regularly used by church members and the local community for dog walking, sitting and chatting or contemplation. There is a monthly "Campfire Church" in the garden and this has attracted families with young children, particularly from our two church primary schools and Holcombe Brook School, where we have close links through our Open the Book Team that takes weekly assemblies there.



We hold monthly "Quiet Mornings" providing an opportunity for personal reflection for two hours. Notes are provided to assist thoughts and several areas of the building and garden are available to use. Usual attendance is around 20 adults, with a further 20 sets of notes being distributed to those unable to attend.

We have an active prayer and study life with a daytime Pilgrim Study Group during the week and an early morning weekly prayer group. Regular monthly Communion services are taken into Hewlett Court, a local residential home, and we have annual carol singing there and at Valley Court, a McCarthy and Stone establishment.



# OUR WORSHIP CENTRES



## ST MARY, HAWKSHAW

At St Mary's we have a mix of services: All-Age Worship, sometimes with Communion, or Morning Worship or Communion "with groups" when the children and young people go out for their own teaching before the Bible reading. The average age of the congregation has been going down over the last few years and the overall attendance slowly increasing, although currently we are failing to hold the teenagers. Attendances have averaged 45 to 50 adults and 15 to 20 children.

Worship is informal (robes are not worn) and it tends to be different every week, not least, because there are always several people involved, and they each bring their own styles and gifts. Formal liturgy is minimal.

On most Sundays, music is led by a small group featuring guitar, keyboard and drums, with modern worship songs predominating. Usually there are two or three who lead the singing.

A crèche is available within the nave for our youngest children allowing parents to remain part of the service while their children play in a safe, stimulating environment.

During Communion there is prayer ministry provided by two members of the prayer ministry team.

The Hawkshaw services are streamed live and available on YouTube.

Mid-week study groups are held in parishioner's homes.







## OUR WORSHIP CENTRES

**Sunday Club**, led by an incredible team of volunteers, is for our children from preschool age up to year 5. Sunday Club takes place at St Mary's Primary school during term time except for the first Sunday of each month when we stay in church for All-Age Worship. We aim to follow the same reading as the church service whenever possible and the children participate in lots of fun activities all based on the passage of the week.



**Sunday Cellar** is our Sunday morning group for young people in years 6 to 9, meeting in St Mary's cellar.



# CHILDREN & YOUNG PEOPLE



## CHILDREN & FAMILIES LEAD

Liz Webber is employed (part time – 15 hours per week) as our Children and Families Lead tasked with reaching out to families and young people in schools, congregations and the wider community.

## OUR CHURCH SCHOOLS

There are strong links with the two Voluntary Aided Church Schools. The schools now share an Executive Headteacher who is very supportive of church involvement. Both schools have Foundation Governors representing the Parish.

Emmanuel CE Primary School  
Helmshore Road, Holcombe,  
Bury. BL8 4PA  
Ofsted March 2024 'Good' School.  
Personal Development is  
'Outstanding.'  
School Roll: 118 max (113)



St Mary's CE Primary School  
Bolton Road, Hawkshaw, Bury.  
BL8 4JL  
Ofsted November 2024 'Good  
School'.  
School Roll: 105 max (95)





## CHILDREN & YOUNG PEOPLE



Our **Open the Book Team** visit weekly to give an assembly at Holcombe Brook Primary School and have developed a strong link, albeit this school has no formal connection with the church. The team is made up of members of our churches and from outside the parish.

There are three other primary schools within the parish with which we currently have no church links, plus one high school and one Islamic college.

### CHILDREN'S & YOUTH ACTIVITIES

**Campfire Church** is one of our “Fresh Expressions” of church which takes place in the Emmanuel Church Centre garden once a month, come rain or shine, aimed specifically at families with worship, bible teaching, hot chocolate and fun.





# CHILDREN & YOUNG PEOPLE



**The Cellar** at St Mary's is our youth group for years 7 – 9 which meets weekly attracting about 20 children with a team of five or six adult leaders. The Cellar is a wonderful space for our young people! It is equipped with pool, table tennis, football and air hockey tables, and has a wonderful relaxed atmosphere for fun and games, with plenty of space for sitting and chatting on the sofas, with time to explore the Christian faith.





## CHILDREN & YOUNG PEOPLE



Each year at St Mary's we run a **Holiday Club** for primary age children. There are crafts, games, songs, bible stories, challenges, worship and teaching. The sessions regularly attract 40+ children.

We have invited children to **Experience Christmas** and **Experience Easter** for several years now which is always well received by our partner schools.



Last year we ran the Scripture Union **"Go Wild!"** outdoor after-school club for six sessions during the summer term.

**Glow** is our annual light-themed celebration, formerly known as the 'Light Party'. This year it takes the form of a disco, bringing together children from our church and partner schools. Held around the time of Halloween, Glow is all about sharing the light of Jesus through fun, music, and community.





# CHILDREN & YOUNG PEOPLE



Our annual **reception party** held each September provides us with an opportunity to warmly welcome new families from our partner schools and their children into the life of the parish. It provides an opportunity for parents, carers and children new to the schools to meet others in a relaxed and friendly setting, helping to build a sense of community right from the start of the school journey.



**Yorkshire Camps:** Each year we run two exciting weekends away to Yorkshire camps: one for KS2 children and one for KS3. These weekends bring together children from our church centres and partner schools for a time of fun and friendship with plenty of activities, games and opportunities to explore the Christian faith.



Each year we welcome a group of students from Capernwray Bible College for a ten-day outreach in our parish. During their visit the students bring energy and encouragement as they spend time in our local schools and parish groups, sharing their faith in practical and creative ways. As part of their stay, we also host special community events such as a ceilidh and a games night. These gatherings attract families from across the parish and our partner schools, providing opportunities to connect, celebrate and enjoy time together.



# FELLOWSHIP & COMMUNITY

## CHURCH-BASED GROUPS

**Sizzling Seniors** meet at St Mary's once a month: an opportunity to get together for refreshments, crafts and a chat. This regularly attracts around 16 adults.

There is a weekly **Drop-In** each Monday morning in the church hall at ECC (Canon Lewis Hall) attracting about 20 senior adults. During the winter we follow this with a soup lunch as part of our provision of **Warm Spaces**.

**Soup Company**, also at Canon Lewis Hall, occurs once per month serving around 30 regulars and this is followed by Holy Communion.

**Afternoon Fellowship** and **Mothers' Union**, both at ECC, are monthly meetings of predominantly retired people. They have talks, film shows, entertainment and fundraising events, attracting about a dozen at each.

**Wednesday Afternoon Play Group** (Canon Lewis Hall) meets weekly during term time for toddlers and carers. Usual attendance: 10 children and 8 adults.

**Coffee & Cake** in St Mary's church after the school drop-off, once a week, offers parents, carers and their young children an informal, relaxed space to meet, chat and find support. The crèche area is set up for little ones to play. Plans are also underway to launch an afternoon version of Coffee & Cake at Emmanuel School.

## ELLEN STRANGE MEMORIAL WALK

This is an annual event hosted by Holcombe Church, organised by Endeavour – a domestic abuse charity. It is an opportunity to remember all those who have died in the past year as victims of domestic abuse. There is an informal service at the grave of Ellen Strange, the first recorded death from domestic abuse, followed by a walk onto the moors to the site of the murder. Approximately 70 people attended the most recent event.

## VOLUNTARY GROUPS AND COMMERCIAL BOOKINGS

The church has strong links with various organisations who use our buildings such as D-CaFF, for those suffering with dementia, attracting over 100 people, Probus and The Scout and Guide Association. Other bookings include the Women's Institute, Storytime Adventures, run by our Children and Families Lead, Karate and various other family celebrations.



# NEIGHBOURING CHURCHES



## MISSION COMMUNITY

We are part of Mission Community 3: Ramsbottom and Tottington

This comprises the parishes of:

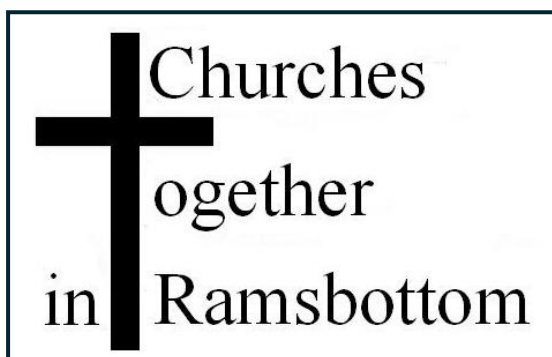
- Holcombe and Hawkshaw – 3 churches
- Ramsbottom and Edenfield – 4 churches
- Tottington, St Anne

We have established the Annual Mission Community Walk: the opportunity to have an invigorating, sociable walk (about 10 miles), calling at each of the church buildings in the Community, or for the less energetic, just one or two buildings! This culminates in a barbecue at ECC.

A steering committee with representatives from each parish meets approximately three times a year. There are plans to hold more joint services.

So far one Focal Leader has been commissioned; Stephen Newhouse at Emmanuel Holcombe Church.

## CHURCHES TOGETHER IN RAMSBOTTOM



Churches Together in Ramsbottom is an ecumenical group of 13 churches in the Ramsbottom area, from Edenfield Parish to the north of the town, to The Emmanuel Church Centre in the south. The group has existed for over 30 years and organises events that would be too large for a single church. These include a Christmas Day and Easter meal at Canon Lewis Hall for

people who would otherwise be on their own, the Easter Son Rise Service on Holcombe Hill, carol singing and “Get in the Picture” at the Christmas Markets. There are also regular prayer breakfasts. The recent *#doyouknowHim?* campaign has played a major part in mission.

The clergy and lay representatives from each parish meet regularly to plan events and support each other. They also meet four to six times a year to plan events which often tie in with the festivals in this vibrant town.



# THE MINISTRY TEAM

## ORDAINED MINISTERS LICENSED TO THE PARISH



**Rev Vic Fletcher OLM**



**Rev Robert Airey,**  
retired OLM with PTO

## READERS



**Richard Byrom**  
(Emeritus)



**Michael Burton**  
(Emeritus)



**Ethel Houghton**

**Jane Fetcher**, retired Reader: Areas of continuing interest: Prayer ministry, pastoral work and a Spiritual Companion with Manchester Diocese.



# THE MINISTRY TEAM



## AUTHORISED LAY MINISTERS

|                        |                                     |
|------------------------|-------------------------------------|
| <b>Barbara Atkin</b>   | - Pastoral, prayer and spirituality |
| <b>Jen Hardcastle</b>  | - Pastoral                          |
| <b>Judith Horrocks</b> | - Prayer and spirituality           |
| <b>Jean Houghton</b>   | - Pastoral, prayer and spirituality |
| <b>Romey Simpson</b>   | - Pastoral                          |

## CHILDREN & FAMILIES LEAD



**Liz Webber**

Employed part-time 15 hours/week

## FOCAL LEADER



**Stephen Newhouse**

Emmanuel, Holcombe

## CONTINUING DEVELOPMENT

We have seen a number of our congregation encouraged to develop into Readers. There is also continuing interest expressed in ordained ministry.



## LICENSED PLACES OF WORSHIP



### **St Mary, Hawkshaw**

Built in 1892

Seating capacity approx. 220

Car parking on main road,  
school playground used  
when available.

Plans are in hand to replace  
the old heating system and  
to provide better toilet and  
kitchen facilities. Pews have  
been removed giving a  
wonderful open area.

### **Emmanuel Church, Holcombe**

Built in 1853

Seating capacity approx. 300

Car parking on main road

Outdated toilets have recently been replaced by an accessible toilet. A new retracting projection screen has been installed. Dedicated teams of parishioners have worked on improving the churchyard and Garden of Remembrance. We have plans to replace the kitchen area in the future and we have explored the need to remove pews in the south aisle to create an open area.





# LICENSED PLACES OF WORSHIP



## **Emmanuel Church Centre**

Built in 1976 (Canon Lewis Hall), extended in 1996, to become Emmanuel Church Centre. Seating capacity approx. 200. Car parking: dedicated car park.

All main entrance doors are accessible without steps. Recently the car park was completely resurfaced. The outside of the building now has new cladding. A structural fault to one outside wall resulted in the whole wall, windows and doors being replaced and the toilets have recently been modernised. A dedicated team of parishioners tend to the garden to the rear of the building which was created in 2016.



All three worship centres have Bronze Eco Church Status (2024) and are working towards Silver, and all groups are encouraged to use Fairtrade products and be good stewards with recycling.

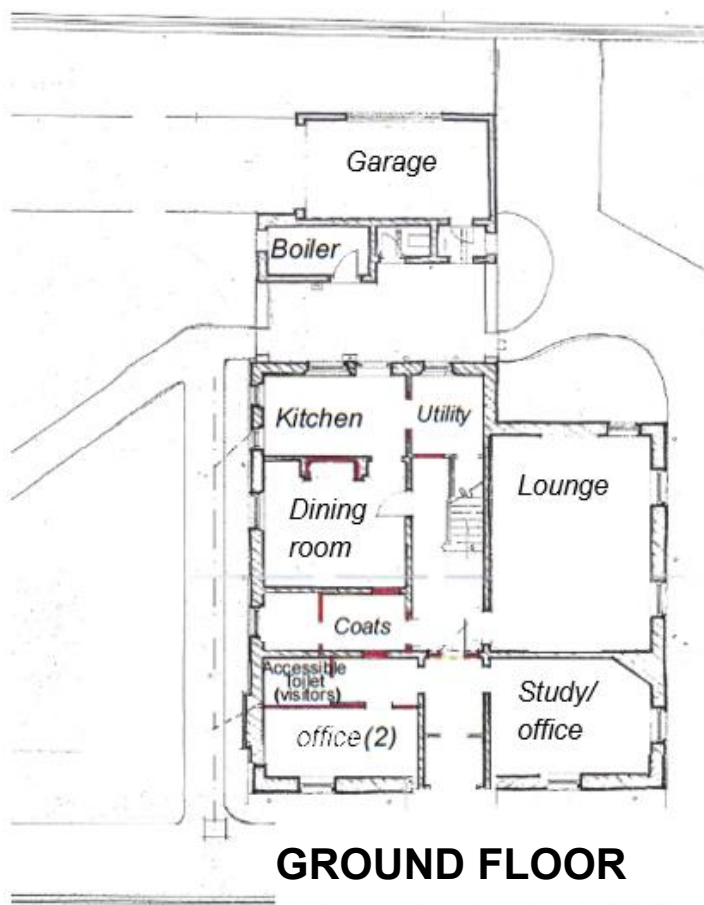


# THE VICARAGE

## Official Clergy Housing:

**The Vicarage, Bolton Road, Hawkshaw, Bury, BL8 4JN**

The vicarage is a good late Victorian house with south-facing main rooms, conveniently located next to St Mary, Hawkshaw Church building. Five bed-roomed, with a separate study/office and downstairs cloakroom. The property has gas central heating and a very mature established garden.



## FLOOR PLAN



The vicarage water rates and council tax are paid by the PCC.





## STEWARDSHIP

In 2024 we held a “Giving in Grace” campaign which resulted in a moderate increase in giving. For the last two years we have paid our Parish Share in full (agreed revised amounts). However, the parish needs to maintain and heat/light three worship centres and we have seen a large increase in energy costs over the past five years. Also, we didn’t see any increase in general giving for the years following Covid. We find parishioners donate well for specific projects, but it has been difficult to increase weekly/monthly giving.

### Parish Share

| Year | Allocated | Revised Agreed | Paid    |
|------|-----------|----------------|---------|
| 2020 | £47,000   |                | £47,000 |
| 2021 | £49,000   |                | £41,000 |
| 2022 | £51,000   |                | £30,000 |
| 2023 | £56,100   | £40,000        | £40,000 |
| 2024 | £61,700   | £43,000        | £43,000 |
| 2025 |           | £45,500        |         |

## MISSION GIVING

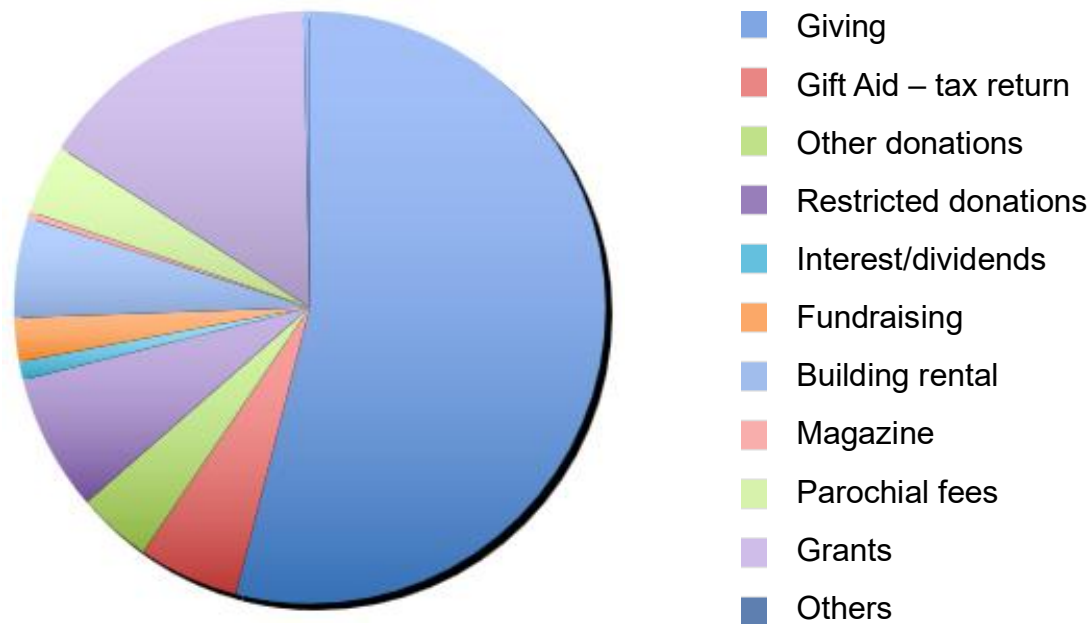
Every year we, as a parish, aim to give 10% of our offerings to charity as our Mission Giving. This is as well as supporting charities individually such as Transforming Lives for Good and Compassion, and parish giving to the Children’s Society through the boxes in parishioner homes. We support Bury Hospice in lieu of sending Christmas cards. We support the Porch Project and Ramsbottom Pantry, (local food bank), with weekly donations. At present we give to local, national and international charities to express our Mission at Home and our Mission Abroad. These have included:

*South American Missionary Society, Church Missionary Society, Philippine Outreach Centre, Christian Aid, Scripture Union, the Church Army and Wycliffe Bible College.*

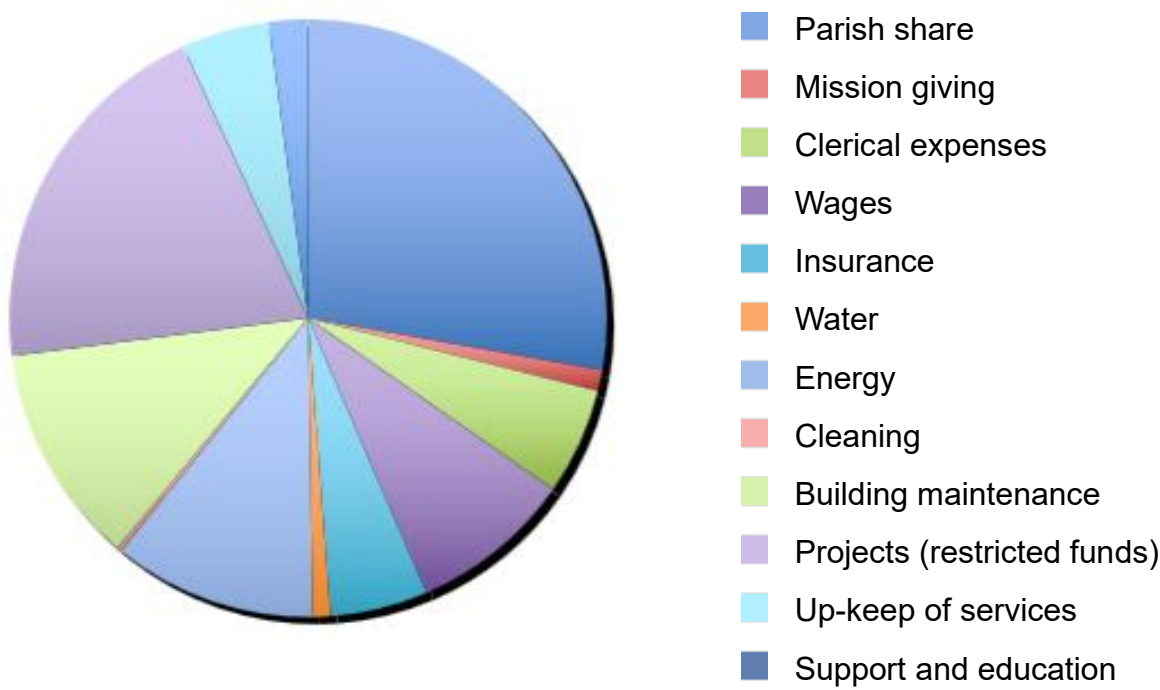


# ACCOUNTS 2024

## INCOME FOR THE YEAR ENDED 31 DECEMBER 2024



## EXPENDITURE FOR THE YEAR ENDED 31 DECEMBER 2024





# ACCOUNTS 2024



## Statement of income and expenditure for the year ended December 2024

| Income   |                   | Expenditure                           |                   |
|--|-------------------|---------------------------------------|-------------------|
|  | £                 |                                       | £                 |
| <b>Voluntary Income</b>                        |                   | <b>The Ministry</b>                   |                   |
| Planned Giving - Gift Aid                      | 66,689.53         | Ministry Expenses                     | 9,445.82          |
| Planned Giving - Un-gifted                     | 2,568.78          | Support & Education                   | 2,776.22          |
| One off Gift Aid                               | 2,900.34          |                                       | <b>12,222.04</b>  |
| Cash/Collections                               | 5,873.35          | <b>The Church and Services</b>        |                   |
| Income tax recovered                           | 18,803.60         | Energy                                | 17,071.38         |
| Fund Raising Events                            | 3,201.70          | Water                                 | 1,456.56          |
| Magazine                                       | 480.60            | Cleaning                              | 380.00            |
| Use of Church Buildings                        | 7,335.46          | Insurance                             | 8,203.05          |
|  | <b>107,853.36</b> | Upkeep of Services                    | 8,268.57          |
|  |                   | Church Maintenance                    | 11,600.52         |
|  |                   | Churchyard                            | 6,914.03          |
|  |                   |                                       | <b>53,894.11</b>  |
| <b>Other Ordinary Income</b>                   |                   | <b>Other Ordinary Expenditure</b>     |                   |
| Dividends and Interest                         | 1,334.42          | Wages                                 | 13,611.47         |
| Fees to PCC                                    | 10,099.10         | Magazine                              | -                 |
|  | <b>11,433.52</b>  | Fund Raising costs                    | 480.00            |
|  |                   | Verger/Organist                       | 1,527.99          |
|  |                   |                                       | <b>15,619.46</b>  |
| <b>Extraordinary Income</b>                    |                   | <b>The Diocese</b>                    |                   |
| Restricted Donations                           | 10,018.29         | Parish Share                          | 43,000.00         |
| (i) Grants                                     | 20,988.64         | Other Diocese costs                   | 5,002.00          |
| Special Appeals                                | 434.00            |                                       | <b>48,002.00</b>  |
|  | <b>31,440.93</b>  | <b>Payments to Missions/Charities</b> |                   |
|  |                   | Mission/Charities                     | 1,765.00          |
| <b>Total Income 2024</b>                       | <b>150,727.81</b> |                                       | <b>1,765.00</b>   |
|  |                   | <b>Extraordinary Expenditure</b>      |                   |
| Income 2023                                    | <b>170,226.91</b> | Energy Savings Fund                   | -                 |
|  |                   | ECC Golden Jubilee Renovation Fund    | 23,277.60         |
|  |                   | Holcombe Building Fund                | 507.11            |
|  |                   | Hawkshaw Building Fund                | 350.00            |
|  |                   | Hawkshaw Heating Fund                 | 6,525.00          |
|  |                   | Mission Funding                       | 500.00            |
|  |                   |                                       | <b>31,159.71</b>  |
|  |                   |                                       | <b>162,662.32</b> |
| <b>Notes</b>                                   |                   | <b>Total Expenditure 2024</b>         |                   |
| (i) £19,000.00 Grant received for ECC Cladding |                   | Expenditure 2023                      | 197,964.58        |
| 1988.64 revitalisation funding grant           |                   |                                       |                   |

| YEAR END STATEMENT 2024  |                  |
|--|------------------|
| <b>Bank Balances 31 December 2024</b>  | <b>Total</b>     |
| Current Account  | -                |
| Deposit Account  | 56,737.99        |
| Direct Giving Accounts   | 2,874.97         |
| Restricted Funds Account   | 844.46           |
| Cash   | -                |
|  | <b>60,457.42</b> |
| Less Unpresented cheques   | -                |
| Year End Total   | <b>60,457.42</b> |
| <b>Restricted/Designated Funds</b>   |                  |
| Energy Savings   | 5,000.00         |
| ECC Golden Jubilee Renovation  | 6,327.74         |
| Holcombe   | 7,420.13         |
| Hawkshaw   | 656.00           |
| Hawkshaw Heating   | 42,097.69        |
| Mission and Christian Camp (ex Malawi)   | 1,431.64         |
|  | <b>62,933.20</b> |
| <b>Working Balance (i)</b>   | <b>6,062.82</b>  |
| <b>Notes (i)</b>   |                  |
| 2024 2nd half Gift Aid received in January.                                    |                  |
| Gift Aid required to pay Parish Share and Rector Expenses & Parish Expenditure |                  |

| STATEMENT OF ASSETS AT 31 DECEMBER 2024  |                    |                    |
|--|--------------------|--------------------|
|  | Balance 31/12/2023 | Balance 31/12/2024 |
| <b>Investments</b>   |                    |                    |
| Santander Shares   | 313.11             | 456.12             |
| CCLA Investment  | 4,127.76           | 4,221.01           |
| CCLA - Restricted Holcombe Endowments  | 1,011.18           | 1,061.72           |
|  | <b>5,452.05</b>    | <b>5,738.85</b>    |
| <b>Bank Accounts</b>   |                    |                    |
| Current Acc  | -                  | -                  |
| Deposit Acc  | 77,013.27          | 56,737.99          |
| Direct Giving Acc  | 3,084.87           | 2,874.97           |
| Restricted Acc   | 832.39             | 844.46             |
| Cash Not banked  | -                  | -                  |
|  | <b>80,930.53</b>   | <b>60,457.42</b>   |
| <b>Adjustments</b>   |                    |                    |
| 2024 Gift Aid return   | -                  | 11,416.35          |
| Rector Parish Expenditure  | -                  | 872.05             |
| Rector Expenses  | -                  | 2,005.70           |
|  | -                  | <b>8,538.60</b>    |
| <b>TOTALS</b>  | <b>86,382.58</b>   | <b>74,734.87</b>   |
| <b>Notes</b>   |                    |                    |
| 2024 2nd half Gift Aid received in January.                                    |                    |                    |
| Gift Aid required to pay Parish Share and Rector Expenses & Parish Expenditure |                    |                    |



# CHALLENGES & OPPORTUNITIES

- Finding new and relevant ways to spread the Good News of Jesus
- Ageing congregations
- Planning for succession: reader and ordained ministry; church officers
- Drawing teenagers in
- Completing our visionary projects when finance is tight
- Encouraging the prayer life of the parish
- Building up our mid-week study groups
- Filling our churches
- Developing stronger community links



Hawkshaw Gala

# APPENDIX 1 : Information



## PARISH AND DIOCESAN INFORMATION

**The Parish of Holcombe and Hawkshaw:** The parish has no theological or other objection to the ordination of women to the priesthood.

**Post we are looking to fill:** Rector and Mission Community Leader

**Patrons:** Rev Julian Heaton, Rector of Bury  
Bury Rectory, Tithebarn Street, Bury BL9 0JR      Tel: 0161 7642452  
julian.heaton\_1@outlook.com

CPAS, Rev Canon Jon Scamman CEO  
Sovereign Court One (Unit 3), Sir William Lyons Road,  
University of Warwick Science Park, Coventry CV4 7EZ  
Tel: 0300 1230780  
jscamman@cpas.org.uk

**Archdeaconry:** Bolton      The Venerable Dr Rachel Mann      Tel: 07834 403195  
rachelmann@manchester.anglican.org

**Bury and Rossendale Deanery,**

**Area Dean:** Rev Canon Donna Williams      Tel: 07484 030757  
donnawilliams@manchester.anglican.org

**Deanery Lay Chair:** Kath Pollard

**Church Wardens:** Stephen Newhouse      stephen@holcombehawkshaw.org  
Peter Hardcastle      pjhardcastle6@gmail.com

## COMMUNICATIONS

**Publications:** Holcombe Messenger – parish magazine available on website  
Weekly email – sent to 200 addresses in the parish  
Yearbook and Annual Report available on website

**Website and Social Media:** Website: <https://holcombehawkshaw.org/>  
Facebook      <https://www.facebook.com/holcombeandhawkshaw/>  
Twitter X      <https://x.com/holchawckofe>  
Instagram      Young Life at Holcombe and Hawkshaw  
YouTube      Sunday morning services are live-streamed from St Mary's Church

The Parish has entries on "A Church Near You".





## APPENDIX 3 : Worship Pattern



|               | <b>ECC</b>  | <b>HAWKSHAW</b>   | <b>HOLCOMBE</b>  |
|---------------|---|---|--|
| <b>Week 1</b> | 9.30am<br>Holy Communion CW   | 10.45am<br>All-Age Worship<br>with Holy<br>Communion                | 11am<br>Morning Worship<br>CW  |
| <b>Week 2</b> | 9.30am<br>Morning Worship<br>3.00pm<br>Campfire Church                          | 10.45am<br>Morning Worship<br>with children's<br>groups             | 11am<br>Holy Communion<br>CW   |
| <b>Week 3</b> | 9.30am<br>Holy Communion CW   | 10.45am<br>Holy Communion<br>with children's<br>groups              | 11am<br>Morning Worship<br>CW<br>6.30pm (summer)<br>3.00pm (winter)<br>Choral Evensong<br>BCP 1662 |
| <b>Week 4</b> | 9.30am<br>Morning Worship   | 10.45am<br>Morning Worship<br>with children's<br>groups             | 11am<br>Holy Communion<br>CW   |
| <b>Week 5</b> | 9.30am Taizé  | 10.45am<br>Morning Worship<br>with children's<br>groups             | 11am<br>Holy Communion<br>BCP 1662   |
|               | <b>2<sup>nd</sup> &amp; 4<sup>th</sup> Thursday</b><br>2.00pm<br>Holy Communion | <b>Weekly</b><br>6.30pm<br>Evening Worship at<br>parishioner's home |  |



# APPENDIX 4 : Attendance Figures

Official Parish Population: 8567 (2021)

Number on the Electoral Roll (2025): 151

Average weekly attendance and numbers of baptisms, weddings and funerals

| St Mary, Hawkshaw        | 10.45 am service<br>Average Attendance |       | Baptism | Thanksgiving | Communion before | Confirmed | Marriages | Funerals | Inter Ashes Church Yard | Carol Service |       | Christmas Communicants | Good Friday |       | Easter Communicants |
|--------------------------|--|-------|---------|--------------|------------------|-----------|-----------|----------|-------------------------|---------------|-------|------------------------|-------------|-------|---------------------|
|                          | Adult                                  | Child |         |              |                  |           |           |          |                         | Adult         | Child |                        | Adult       | Child |                     |
| Aug 2022 to July 2023    | 46                                     | 16    | 1       | 1            | 0                | 2         | 0         | 2        | 1                       | 180           | 40    | 34                     | 40          | 17    | 72                  |
| Aug 2023 to July 2024    | 49                                     | 15    | 3       | 0            | 0                | 0         | 1         | 6        | 0                       | 180           | 28    | 37                     | 25          | 8     | 61                  |
| August 2024 to July 2025 | 46                                     | 11    | 5       | 2            | 0                | 2         | 0         | 1        | 0                       | 150           | 35    | 45                     | 29          | 6     | 48                  |

| Emmanuel Church Centre   | 9.30am service<br>Average Attendance |       | Campfire Church once per month.<br>Average Attendance |       | Funerals | Carol Service | Christmas Communicants | Easter Communicants | Holy Communion | Holy Communion |
|--------------------------|--------------------------------------|-------|---|-------|----------|---------------|------------------------|---------------------|----------------|----------------|
|                          | Adult                                | Child | Adult   | Child |          | Adult         | Adult                  | Adult               | Average Week 2 | Average Week 4 |
| Aug 2022 to July 2023    | 24                                   | 0     | 20  | 9     | 0        | 45            | 14                     | 30                  | 20             | 9              |
| Aug 2023 to July 2024    | 24                                   | 0     | 20  | 7     | 0        | 52            | 11                     | 30                  | 20             | 7              |
| August 2024 to July 2025 | 23                                   | 0     | 17  | 7     | 1        | 50            | 21                     | 34                  | 17             | 7              |

| Emmanuel Holcombe        | 11.00am service<br>Average Attendance |       | 6.30 Choral Evensong<br>Average Attendance |       | Baptism | Thanksgiving | Communion before | Confirmation | Confirmed | Marriages | Funerals | Inter Ashes Church Yard | Carol Service |       | Crib Service |       | Christmas Communicants | Good Friday | Easter Communicants |
|--------------------------|---------------------------------------|-------|--|-------|---------|--------------|------------------|--------------|-----------|-----------|----------|-------------------------|---------------|-------|--------------|-------|------------------------|-------------|---------------------|
|                          | Adult                                 | Child | Adult                                      | Child |         |              |                  |              |           |           |          |                         | Adult         | Child | Adult        | Child |                        |             |                     |
| Aug 2022 to July 2023    | 23                                    | 1     | 23   | 0     | 1       | 1            | 0                | 0            | 4         | 11        | 4        | 4                       | 59            | 12    | 29           | 11    | 32                     | 26          | 45                  |
| Aug 2023 to July 2024    | 23                                    | 2     | 23   | 0     | 3       | 2            | 0                | 0            | 3         | 7         | 4        | 4                       | 91            | 16    | 49           | 17    | 36                     | 18          | 44                  |
| August 2024 to July 2025 | 21                                    | 1     | 26   | 0     | 4       | 1            | 0                | 0            | 4         | 10        | 8        | 8                       | 70            | 11    | 34           | 18    | 26                     | 36          | 34                  |



# APPENDIX 5 : Mission Community

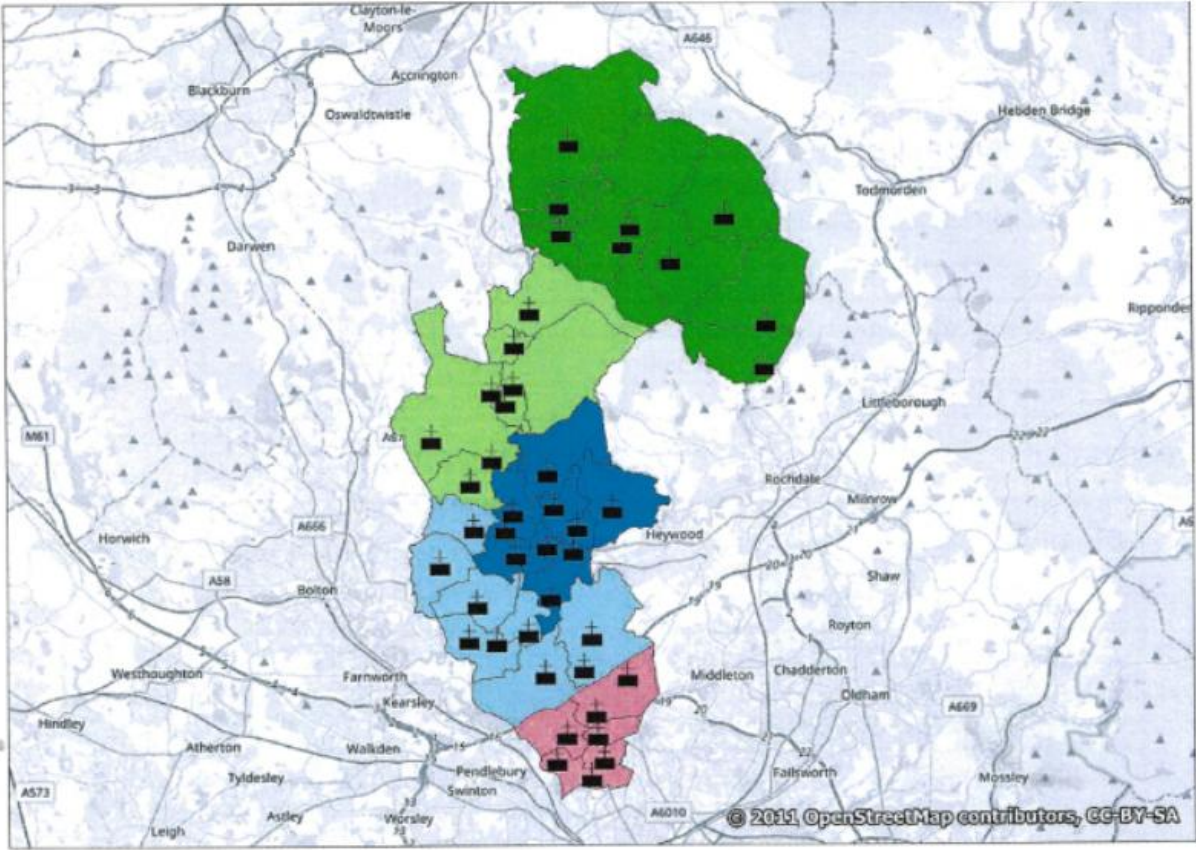


## Deanery at a Glance Bury & Rossendale

|                      |    |
|----------------------|----|
| Mission Communities  | 5  |
| Parishes             | 35 |
| Worship Centres      | 42 |
| CE Primary Schools   | 28 |
| CE Secondary Schools | 1  |
| LINC Funded Parishes | 6  |

|                           |      |
|---------------------------|------|
| Current Deployment (2021) | 16   |
| Planned Deployment (2026) | 14.5 |

|  | Mission Community | Population 2020 | Total All Age AWA 2019 |
|--|-------------------|-----------------|------------------------|
|  | Group 1           | 69,461          | 813                    |
|  | Group 2           | 62,513          | 994                    |
|  | Group 3           | 28,058          | 597                    |
|  | Group 4           | 48,966          | 507                    |
|  | Group 5           | 43,157          | 448                    |
|  |                   | 252,155         | 3,359                  |



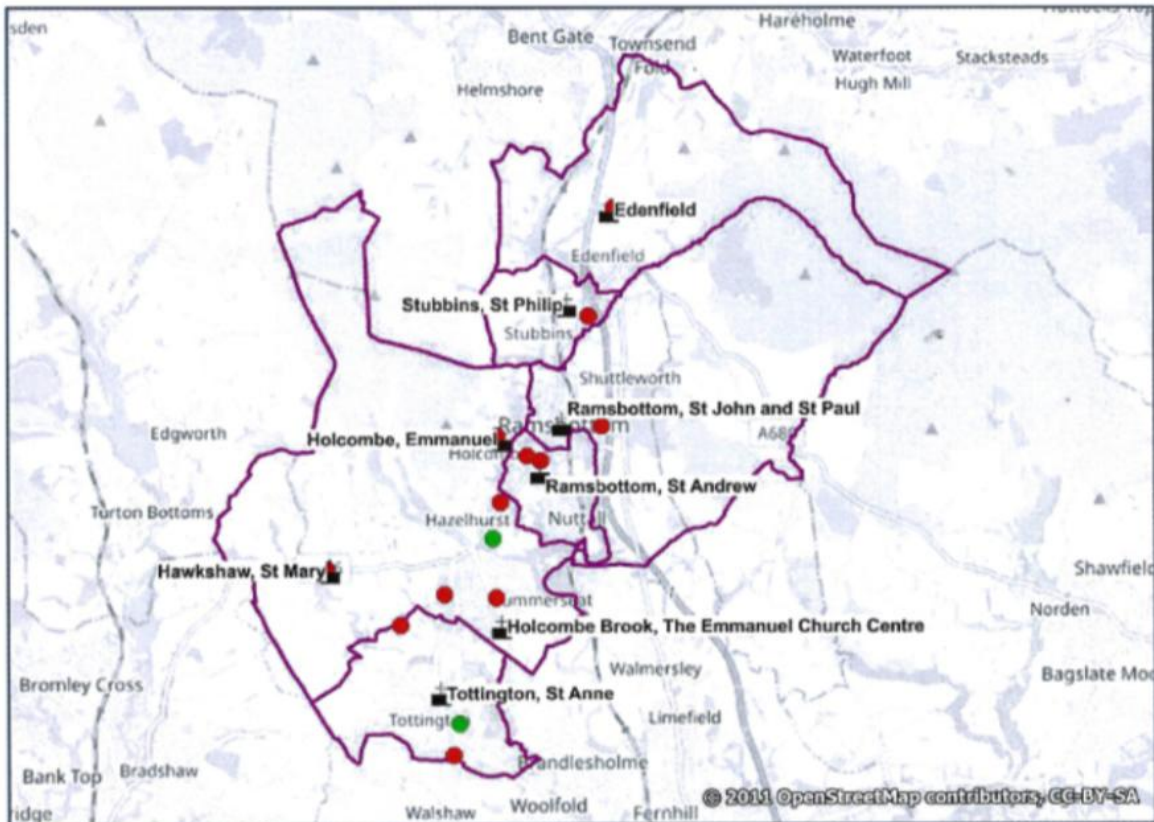
Contains Ordnance Survey data. © Crown copyright and database right 2020.

WE ARE IN MISSION COMMUNITY 3



## APPENDIX 5 : Mission Community

### Bury & Rossendale – Mission Community 3



Churches



Primary schools



Secondary schools

#### Parish

Edenfield

Holcombe and Hawksshaw

St Mary, Hawksshaw

Emmanuel, Holcombe

Emmanuel Church Centre

St Andrew, Ramsbottom

St John and St Paul, Ramsbottom

St Philip, Stubbins

St Anne, Tottington

**Mission Community Leader :** This role will be undertaken by the new incumbent.

# APPENDIX 6 : Mission Com MAP



| MAP Areas  | Actions   |
|--|---|
| <p><u>Growing</u></p> <p>Actions to support the growth in people attending worship</p>             | <ul style="list-style-type: none"><li>• Each parish will explore ways of growing younger, eg new congregations or initiatives, contacts with baptism families, youth church, etc</li><li>• Work with local ecumenical partners to launch #doyouknowHim? across Ramsbottom and Tottington in Advent 2024 through till Easter 2025. This will involve working together in prayer, preaching series, street outreach, Enquirer’s courses, open events; with a common themed publicity to communicate well.</li><li>• Each parish will explore ways to improve Welcome (training, publicity, facilities) and growing disciples (eg Enquirer’s course)</li><li>• Stepping Stones course in each parish in MC</li></ul> |
| <p><u>Nurturing</u></p> <p>Actions to support developing discipleship</p>                          | <ul style="list-style-type: none"><li>• Each parish will explore how to make our engagement with Prayer, Scripture, Worship and Fellowship grow deeper and more varied, working together as appropriate to share learning and ideas. (This will feed into the #doyouknowHim? programme)</li><li>• As part of the #doyouknowHim?, Christian Basics course across the MC, prayer meetings, shared training and sermon series.</li></ul>   |
| <p><u>Serving</u></p> <p>Actions to improve environmental impact and serve local community</p>     | <ul style="list-style-type: none"><li>• For each church to attain Bronze Eco Church Award.</li><li>• Exploring ways of meeting needs of vulnerable groups (choosing focus from Dementia Friendly Church, Anna Chaplaincy, Sight Loss/Hearing Loss Friendly Church) with coordinated training.</li></ul>   |
| <p><b>Sustainability – Actions to support the Church becoming more financially sustainable</b></p> |   |
| <p>Working with diocesan officers to build on stewardship throughout the MC</p>                    |   |





## APPENDIX 7 : Parish MAP

**Growing:** Actions to support the growth in people attending worship.

| Mission Community Action   | Parish response   | Next steps   | By when          | Who responsible                         |
|--|---|--|------------------|---|
| Explore ways of growing younger eg new congregations or initiatives, contacts with baptism families, youth church  | Campfire Church   | Ongoing  | ongoing          | Team                                    |
|  | Go Wild after school club   | Run the club   | ongoing          | Liz                                     |
|  | Welcome party for new reception children at SMH and EHS   |  | Sep-25           | Liz                                     |
|  | Hold preparation course for children to take communion before confirmation  | Plan dates and invite children   | Review           | PLT                                     |
|  | Hold Glow for primary aged children around Halloween  | Plan dates and gather team   | Oct-25           | Liz                                     |
|  | Continue to run Cella Youth Club  | Invite current Year 6 at SMH and EHS to attend from September.                       | ongoing          |   |
|  |   | Promote more widely across mission community   | Review           | Social Media MC meetings                |
|  | Build relationship between existing congregation at ECH and EHS school  | Invite church family to attend end of Year service and harvest service               | Oct 25 & July 26 | Liz, SN magazine, e mail                |
|  | Continue to build relationships through schools work (Collective worship, prayer spaces)                            | Continue to invite children in schools to Campfire Worship and other church events   | ongoing          | Publicity, Social Media - Liz           |
|  | Improve experience for people entering the building for the first time  | Review welcoming at each building  | Jul-26           | Each Worship Centre Team                |
|  |   | Examine the Welcome area in each centre  | Jul-26           | Each Worship Centre Team                |
|  | Publicity   | Assess effectiveness of current methods of communication                             | Apr-26           | PLTPCC                                  |
|  | Run Enquirers' Course   |  | Review           | PLT                                     |
| Mission Community Action   | Parish response   | Next steps   | By when          | Who responsible                         |
| Explore how to make our engagement with Prayer, Scripture, Worship and Fellowship grow deeper and more varied, working together across the MC as appropriate to share learning and ideas.  | Present Bibles to all children in Year 3 in both schools and all centres.   | Buy Bibles and give parents invitation from parish to the school services.           | Sep-25           | Done Sept 25 plan again Sept 26?        |
|  | Increase numbers of people attending small groups.  | Invite people to join a small group. Leaders will promote all small groups available | ongoing          | Review: PLT and all small group leaders |
|  | Quiet mornings  | Ongoing  | ongoing          | BALJ                                    |
|  |   |  |                  |   |
| Mission Community Action   | Parish response   | Next steps   | By when          | Who responsible                         |
| Each church to attain Silver Eco Church Award  | EOC attain Silver Eco Church Award  | Due to complete  | Sep-26           | CC                                      |
|  | ECH attain Silver Eco Church Award  |  | Sep-26           | PL                                      |
|  | SMH attain Silver Eco Church Award  |  | Sep-26           | JR                                      |
| Exploring ways of meeting needs of vulnerable groups (choosing focus from Dementia Friendly Church, Anna Chaplaincy, Sight Loss/ Hearing Loss Friendly Church) with coordinated training.) | Each centre to decide on their focus<br><br>Drop In<br>Sizzling Seniors<br><br>Afternoon Fellowship, Mothers' Union | Discuss at team meetings   | Jul-26           | Teams                                   |

## APPENDIX 8 : Parish Survey



Here are a few examples of answers to a parish survey where we asked parishioners for their thoughts about our new incumbent and their hopes for the future of the parish.

"We need to encourage young adults into church and bring the church into the 21st Century".

"Patience, willing to listen to parishioners wishes, experience of multiple centres of worship".

"A good communicator, compassion, able to spread the word of God to all, approachable".

"Clear communicator for all ages and people at different stages of their lives and faith. Recognising peoples skills and gifts. Coming close to us as family members".

"Ability to communicate clearly, to see the uniqueness of individuals and the distinct nature of the three centres, organisational skills".

Friendly, organised, prayerful, teacher, leader

"Strong faith, good communicator, kindness, dedication".

"Sincerity, integrity, commitment, approachable, caring, sensitive to people's needs, supportive".

Somebody who can cater for the needs of the older generation but also encourage younger worshippers.

"Ability to differentiate with the style of three very different churches".

"Spirit led".

"Christ centred, prayerful, sympathetic to different styles of worship across our three worship centres".

Encouragement for all ages. Grow youth. Encourage prayer.

"Communication, compassion and humour".

"Look at pattern of services - work more with other churches in the mission community. Think innovatively about the future of the church of England in Ramsbottom".

"Teacher. Innovator. Spiritually-led. Integrity. Enabler. Encourager. Pastoral".

"Reach out to the neighbourhood more actively".

"We need to grow! Continue to attract young families, work closely with our two Church primary schools and other local primary schools. Look for opportunities to bring people from our local community into our Worship centres for both Christian and social activities and be seen as a safe and welcoming place in our community".

## **PARISH REPRESENTATIVES**

The following members of the PCC have been elected to represent the parish in connection with the appointment of a new incumbent:

- Dr Richard Byrom
- Canon Jo Venn